



TAD – 7025WA High Performance High-Mu Twin Triode

The TAD™ 7025WA is a miniature, high-mu twin triode for use in first preamp stages of high-gain audio frequency amplifiers. The TAD 7025 WA delivers full gain with smooth top end. No microphony issues even with the most sensitive preamps due to triple mica construction. The TAD 7025 WA supports a fat midrange and creates a bold tone with lots of overtones. Played clean the TAD 7025 WA delivers a warm liquid tone which is very responsive to dynamic playing. Overdriven the 7025 WA provides lots of sustain with well defined mid-range punch. Recommended choice for most demanding guitar amp input/V1 stages. Selection includes balanced systems for superior performance in High-End applications or Stereo applications and high performance phase inverter systems. Upgrades first stages in Phono and CD amplifiers.

The TAD™ 7025WA replaces any 12AX7, 12AX7A/WA/WB/WC, ECC83, 7025, SPAX7-A

We recommend the RT080 TAD 7025WA as Input tube for guitar amplifiers like Diezel ("Pit Spezial"), Blackstar, Brunetti, ENGL, Fender, Marshall, Mese Boogie, Orange etc.

Characteristics of a bogey tube:

Electrical

Heater:	Series	Parallel
Voltage (AC or DC)	12.6V +/-1.0	6.3+/-0.5
Current	0.15	0.3
Heating	Indirect	
Cathode-to-heater potential, max.	150V	
Direct interelectrode capacitances, max.***		
Grid to plate	1.8pF	
Grid to cathode	2.0pF	
Grid to heater	2.0pF	
Plate to cathode	2.1pF	

Mechanical

Operating Position	Any
Base	E9-1, Small Buton 9 Pin
Dimensions:	
Height	58 mm
Seated height	51 mm
Diameter	22.5 mm
Cooling	conventional

Approximate net weight 13 g

***Without external shielding, nominal values

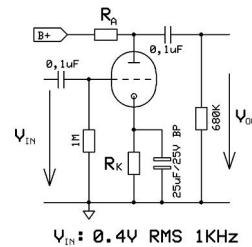
AF Power Amplifier

Maximum ratings	
DC plate voltage	330 V
Positive DC Grid Voltage	0 V
Negative DC Grid Voltage	-55 V
DC cathode current	8 mA
Plate dissipation	1.2 W
Bulb temperature (surface hottest point)	160°C

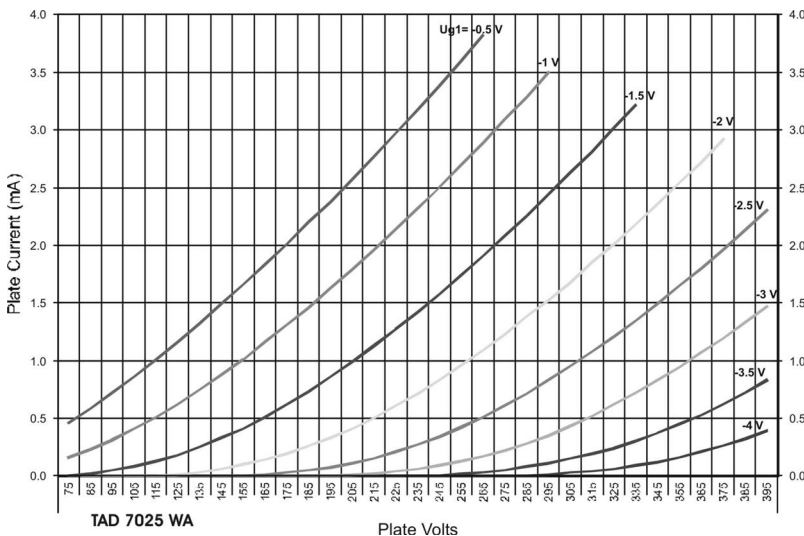
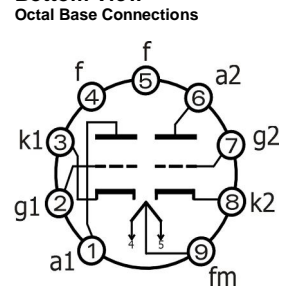
RT080,7025WA

B+ / V	R _A / kΩ	R _K / kΩ	V _{out} / V _{RMS}	V _{out} / V _{IN}	THD / %	I _A / mA
200	47	1,50	14,1	35,3	5,6	0,8
250	47	1,20	15,6	39,0	4,0	1,1
300	47	1,00	16,8	42,0	3,1	1,4
350	47	0,82	17,9	44,8	2,4	1,9
400	47	0,68	18,5	46,3	2,0	2,3
200	100	1,80	18,9	47,3	5,0	0,6
250	100	1,50	20,6	51,5	3,7	0,8
300	100	1,20	22,0	55,0	2,8	1,1
350	100	1,00	23,1	57,8	2,3	1,4
400	100	0,82	24,1	60,3	1,8	1,7
200	220	2,70	21,4	53,5	5,5	0,4
250	220	2,20	23,5	58,8	4,3	0,5
300	220	1,50	25,4	63,5	3,1	0,7
350	220	1,20	26,7	66,8	2,5	0,9
400	220	1,00	27,7	69,3	2,1	1,0

Test arrangement:



Bottom View



Outline View

